



**MYSTERIOUS
POKÉMON THEORIES**



**MYSTERIOUS
POKÉMON
THEORIES**



By: Hillary Gillies

Contents

Introduction: Gotta Find Em' All!

**#5 – The Death of Blue's
Raticate**

Who is this monstrous being and what did he/she do?



**#4 – Gengar is Clefable's
Shadow**

Have you ever tried to hit your own shadow?

#3 – Ditto is a Failed Mew Clone
A new Pokémon has emerged from the “failed ones”... Science experiment gone wrong?



#2 – The Pokémon War

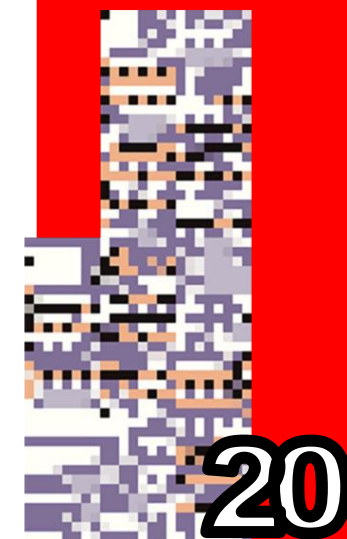
Only one region prevailed...

#1 – Missingno.

Have you forgotten it long ago? Isn't something missing?

I Thought...

What Do You Think?



Published at Petitcodiac Regional School

June 2016

Dedicated to all of the Pokémon fans that exist all over the world.



GOTTA FIND 'EM ALL!

*Have you heard or seen
these Pokémon
theories?*

Do you have a Pokémon game that you play on a DS or an old fashioned Gameboy? If so, then beware! You may just encounter one of the many monsters hidden deep inside the game where no one can see them clear enough... Theories. It sounds a bit weird, but is it really? You may not know it yet, but Pokémon theories are very popular in-game, so ask yourself...

5

The Death of Blue's Raticate



Pokémon Mainly Involved: Raticate

Game/Generation Theory Takes Place In: Red, Blue and Yellow/Gen. 1

Size/Weight of Pokemon: 2'04", 40.8 lbs.

Description of Pokemon: Raticate- It uses its whiskers to maintain its balance. It apparently slows down if they are cut off.



Just think, your rival is planning to beat you on board of a cruise ship. Then, he sends out his fat, brown, big-toothed rat to fight one of your Pokémon. He ends up failing because you're unstoppable and all you do is win, win, win, no matter what!

The next time you see him though, his rat is gone, so the question is, what happened to Blue's Raticate?

The Death of Blue's Raticate

Theory Says...

You caused the death of Raticate. Yes, you are a monster! This happens in the game when Blue challenges you to a battle when you are aboard the S.S. Anne. After you defeat him, Raticate has serious injuries from the battle. There was a crowd and a lot of confusion around you and Blue, so Blue was unable to make it to a Pokémon Center in time to revive Raticate. Then, Raticate passed away. The next time you see your rival, he's in the Pokémon Tower. Why? To lay his deceased Pokémon to rest.

How Could It Happen?

At about halfway through the game, you battle Blue on the S.S. Anne. Blue's team consists of: Lvl. 19 Pidgeotto, Lvl. 18 Kadabra, Lvl. 16 Raticate and a Lvl. 20 starter Pokémon. The next time he challenges you, his Raticate isn't there! When you meet Blue in the Pokémon Tower before you battle him, he's standing in front of a grave. The Pokémon Tower is a graveyard for dead Pokémon.

Creepy Enough!

The creepiest thing about this theory is that it's about the death of a Pokémon and that YOU might have been the one who caused it! Almost everyone's childhood game was Pokémon! Why would there be death in an innocent, childhood game?!

Quick Fact

A Raticate can have 1 of the 2 abilities; Run Away and Guts. The ability Run Away allows it to actually run away when it is in battle. Guts is activated if the Pokémon with the ability has a status condition. The Pokémon's power will increase by 50%.



If you were like Blue and you lost a Pokémon like he lost his Raticate, what Pokémon would you NOT want it to be and why?

#

5



4

3

2

1

4

Gengar is Clefable's Shadow

Pokémon Mainly Involved: Gengar and Clefable

Game/Generation Theory Takes Place In: All games/All generations

Size/Weight of Pokémon: Clefable- 4'03", 88.2 lbs. Gengar- 4'11", 89.3 lbs

Description of Pokémon: Clefable- Its hearing is so acute, it can hear a pin drop from over a mile away. Gengar- To steal the life of its target, it slips into the prey's shadow and silently waits for an opportunity.



Theory #4 states that one Pokémon can be another's shadow... How would that work out?

Both of these Pokémon have been proven to be some of the earliest Pokémon made. One of them is a pastel pink with wings and comes from a mountain called "Mt. Moon". The other is a deep shade of purple with red eyes and tries to scare people or other Pokémon. How could these two possibly be related?

Well, think about this question... Have you ever tried to hit your own shadow?

Gengar is Clefable's Shadow

Theory Says...

"Gengar is Clefable's shadow!" people say, but can we fully believe them? If you have encountered Gengar in any of your Pokémon games and you look for it in your Pokédex, you'll notice Gengar is known as a "shadow" Pokémon. Now we're left wondering, what exactly is it a shadow of?

Creepy Enough!

With Gengar being "Clefable's shadow" and according to Gengar's description, wouldn't it just take the life of Clefable? Plus, would Clefable be its own killer since Gengar is its "shadow"?

How Could It Happen?

First, put one picture of both Pokémon beside each other. You may notice that their body shapes are almost exactly alike, but they do have a few differences between each other. Clefable has a curl for its hair and tail and has magenta wings on its back. Gengar on the other hand, has spiked hair and back and has a straight tail. Another weird thing about these Pokémon is that their types are complete opposite, one being fairy and the other being ghost! They also can't fight each other with attacks of their type. Due to their immunities, they are immune to each other.

Take Note

Clefable and Gengar are the last evolution of its chain. Clefable's evolution chain is: Cleffa, Clefairy and Clefable. Gengar's is: Gastly, Haunter and Gengar.



Quick Fact

Clefable's type was originally "Normal", but Nintendo changed it to "Fairy" when Pokémon X and Y came out. Even when Clefairy had the "Normal" type, Gengar and Clefable were still immune to each other!

#

5



4



3

2

1

3

Ditto the Failed Mew Clone

Pokemon Mainly Involved: Ditto and Mew

Game/Generation Theory Takes Place In: All games/All generations

Size/Weight of Pokemon: Ditto- 1'00", 8.8 lbs Mew- 1'04", 8.8 lbs

Description of Pokemon: Ditto- It can transform into anything. When it sleeps, it changes into a rock to avoid being attacked. Mew- So rare, that it is still said to be a mirage by many experts. Only a few have seen it worldwide.



This version of Mega Mew (above) was created for Pokemon X and Y. This is a good form of Mew, since it has every Pokemon in its cell structure, or DNA, and Mega Mew has a tail of it.



Mew is said to be the ancestor of every known Pokémon. It contains information on every Pokémon in its cell structure. Mew has the ability to use all TMs (Technical Machines: a move received as an item, in a shop or from certain people in the game) and HMs (Hidden Machines: can only be obtained throughout the game as you progress).

Then, we have a blob that is somewhat near the same colour as Mew. Apparently, it was created from trying to make "Mewtwo". More than just "Mewtwo" was created, though. Ditto MAY be the result of failed attempts to create "Mewtwo" ...

Ditto the Failed Mew Clone

Theory Says...

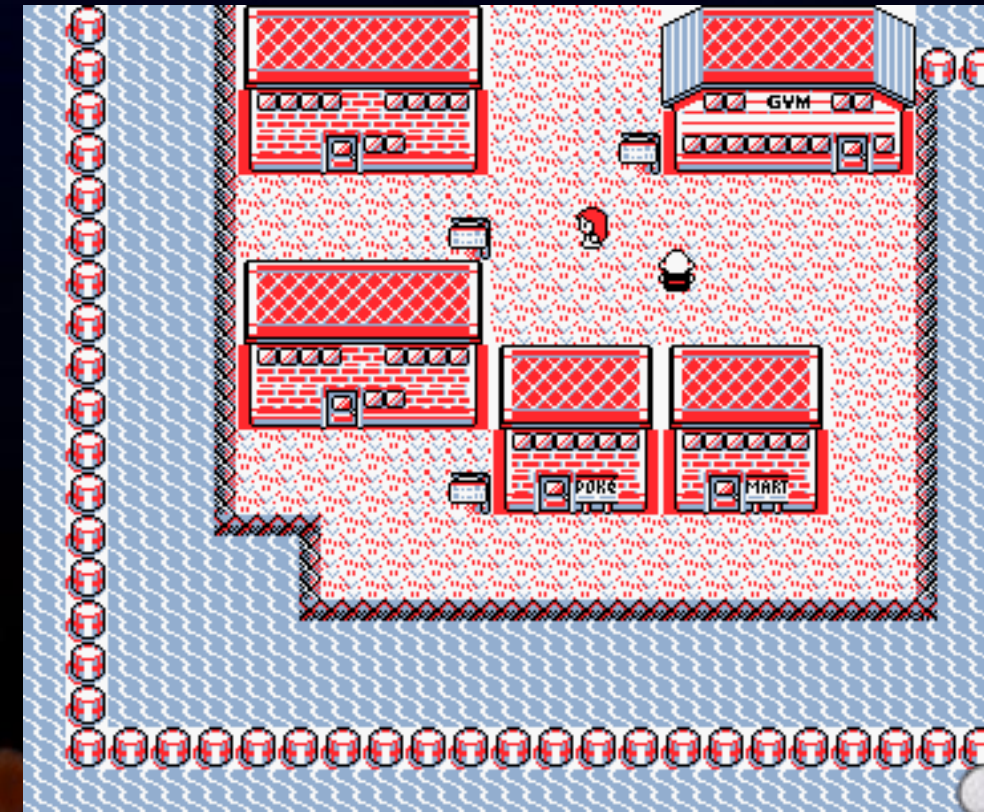
The idea was to get across that Mew was the birth of all Pokémon. It is still unknown if there is more than 1 Mew, but it was Mew who populated the world with its many spawn of all shapes and sizes. Mew is capable of asexual reproduction, the trait that only 1 other Pokémon has, Ditto. Scientists dreamed for so long of creating the "world's best Pokémon". Their plan was to clone Mew and amplify the creation's powers, which resulted in the first artificial Pokémon "Mewtwo".

How Could It Happen?

There are connections between the two, but yet it's very odd that they behave differently. Mew is elusive and rare and Ditto is generic and common. On Cinnabar Island, clues allude to the place for the site (Cinnabar Mansion) of experiments in creation of "Mewtwo", countless cloning. Coincidentally, Ditto is found everywhere on Cinnabar Island...

Creepy Enough!

Mew and Ditto look nothing alike! Maybe just a little bit, but still! It is creepy thinking that Ditto is a failed Mew. How did Ditto end up as a blob, though? Maybe something exploded it or something made it melt...?



Cinnabar Island, where "Mewtwo" was created. The only problem, I don't know which building is the Cinnabar Mansion. Just assume that it's one of the buildings that doesn't say Poké Mart or Gym!



In all its glory, here's "Mewtwo" itself.



If you had the ability to transform into any Pokémon of your choice like Ditto, what Pokémon would it be and why?

#

5

4



3



2

1

2

The Pokémon War



Lt. Surge with his main Pokémon, Raichu.

Pokémon Mainly Involved: Raichu
Game/Generation Theory Takes Place In: Red, Blue and Yellow/Gen. 1

Size/Weight of Pokémon: 2'07", 66.1 lbs

Description of Pokemon: Raichu- When its electricity builds its muscles are stimulated and it becomes more aggressive than usual.



We're so close to seeing the number 1 mysterious Pokémon theory but first, let's check this one out.

Coming in at number 2 is the historical Pokémon war. Thinking about it makes me want to go back in time and see how this war was planned...

Turn to the next page to learn more about the Pokémon war!

The Pokémon War

Theory Says...

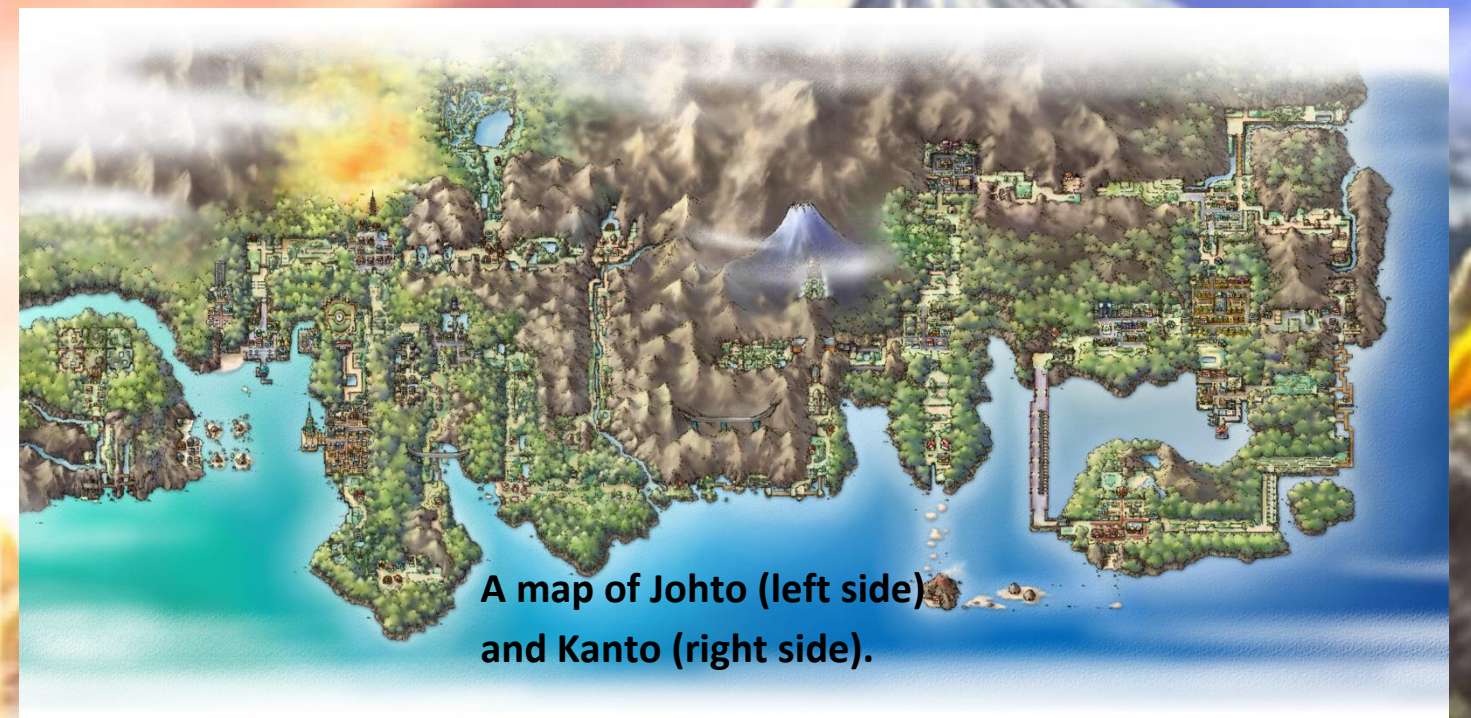
Out of the blue- well, I don't think it would've happened right away. I'm assuming not, but anyway... Out of the blue, a war sprouts between the regions known as Johto and Kanto! When you first start your Pokémon journey, you go downstairs and see Mom. "Where's Dad?" you ask yourself. "Oh, he died in the war, sweetie! (Insert whatever you want your rival's name to be here)'s parents died in the war as well! Even Lt. Surge, he was a part of the war, but he's still alive working as a gym leader! The Kanto region wins the war, too!" Your in-game Mom doesn't actually say this, but the theory does.

How Could It Happen?

Johto is a land of tradition, consisting of dragon caves, kimono girls, sacred wood towers, a dairy farm and tiny towers. Kanto has huge building, cities, power plants, cycling roads, museums and aquariums! With the results of the way these regions are described, Kanto was most likely to have won the war. Another thing, the third gym leader in Kanto, Lt. Surge, says to you, "You won't live long in combat! I tell you kid, electric Pokémon saved me during the war!" Most of the people you meet are normally children and/or gym leaders. Adult men are usually very old and have jobs related to military or organized crime. You are among the first generation of people to live in peace at post-war time.

Creepy Enough!

Wars= violence. Yet again, just like "The Death of Blue's Raticate", it involves death and it's in a kid's game. Did they use equipment to fight, or did they use their Pokémon? Also, how do you feel knowing that your rival's parents are dead? Technically, he's an orphan.



A map of Johto (left side) and Kanto (right side).



This is the badge you receive from Lt. Surge when you beat him. It is known as the "Thunder Badge".



A tragic, yet adorable and heart-warming piece of fan art of the Pokémon war. The Pokémon featured in it are Growlithe (1, 2, and 3), Cubone (2, 3) and Arcanine (4, 5, and 6).

#

5

4

3

2



1

1

Missingno.

Pokémon Mainly Involved: Missingno.

Game/Generation Theory Takes Place In: Red, Blue and Yellow/Gen. 1

Size/Weight of Pokémon: 3'03", 22.1 lbs

Description of Pokémon: Missingno. - Unknown.



Now, here's number 1. This glitchy, unidentified object is the best known glitch Pokémon, ever.

In Japanese, its name is けつばん (Ketsuban), meaning missing number. Its sprite form is a pixelated backwards "L" shape. Missingno.'s type in games Red and Blue are Bird (no longer a type) and Normal. In Pokémon Yellow however, its types are Normal and a randomized, awkward, never-seen-before type; 999.

Missingno.

Theory Says...

I'm not gonna lie, but Missingno. is one of the creepiest glitches. It is said to be a missing Pokémon that had its files erased, but wasn't completely gone. Missingno. is also said to corrupt save and Hall of Fame data if you encounter it.

How Could It Happen?

It may be slightly confusing at first, but here. Marowak (the evolution of Cubone) was originally going to evolve into Kangaskhan in the first generation. Nintendo made a last-minute decision to make Kangaskhan its own Pokémon that wouldn't evolve. The programmers, rather than changing all the code, moved the evolution to a number that didn't exist in the game; creating a missing number. About the Hall of Fame, the reason why Missingno. will corrupt Hall of Fame data is that the proximity to a buffer is used to store decompressed sprite data. It is too small to hold Missingno.'s garbage data.

Creepy Enough!

Believe it or not, there are more than 5 glitches that are possible to happen with Missingno., one of them including that if you catch it, the item in the sixth slot in your bag will increase to the amount of 128. There are 3 other forms of Missingno.: Kabutops fossil, Aerodactyl fossil and Ghost. I don't know what these forms are used for, only that they are used for front sprites...



Ghost and Kabutops fossil mixed.



The Expert Says...

There is a secret form that is in Pokémon Black and White, but it is unknown what it looks like. There is also a glitch in Pokémon X and Y where when you look in a dark building, you see Missingno....



From left to right, Missingno.'s other forms: Ghost, Aerodactyl fossil and Kabutops fossil.

#

5

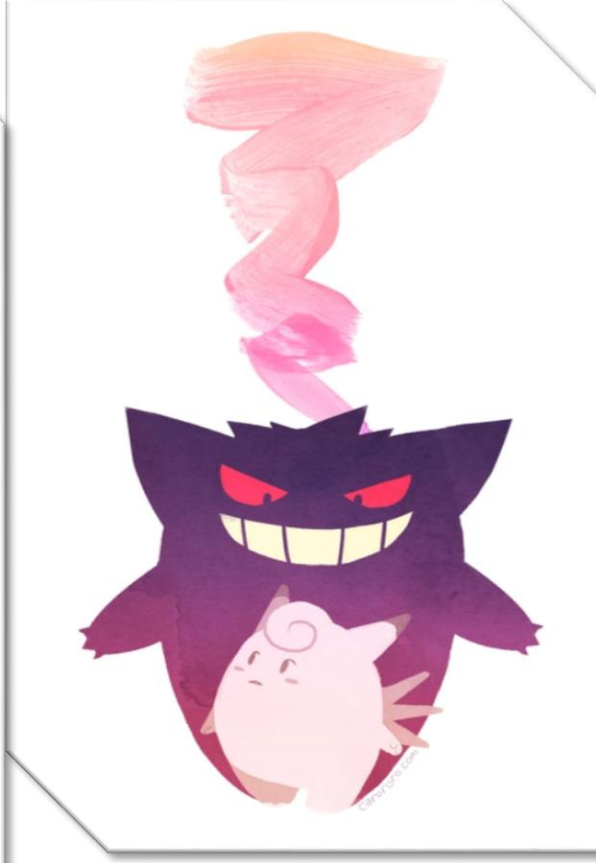
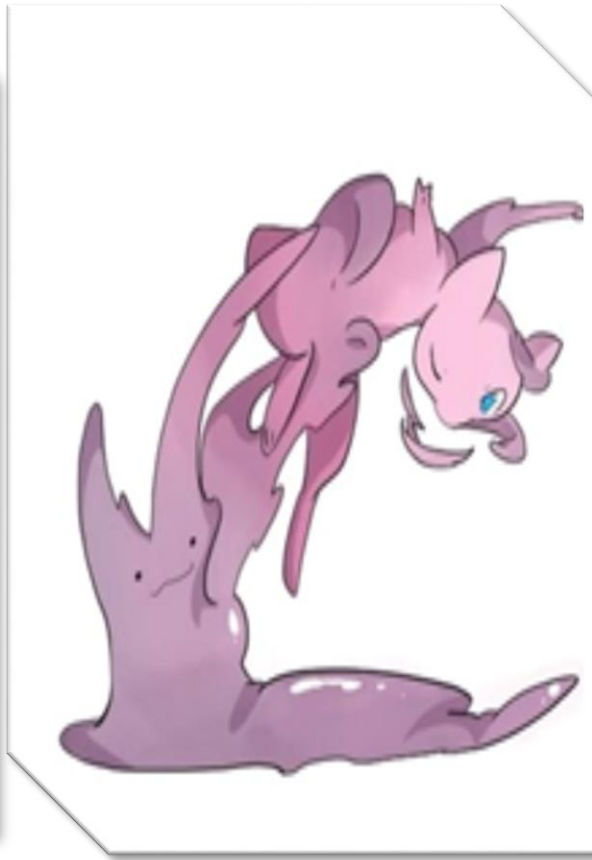
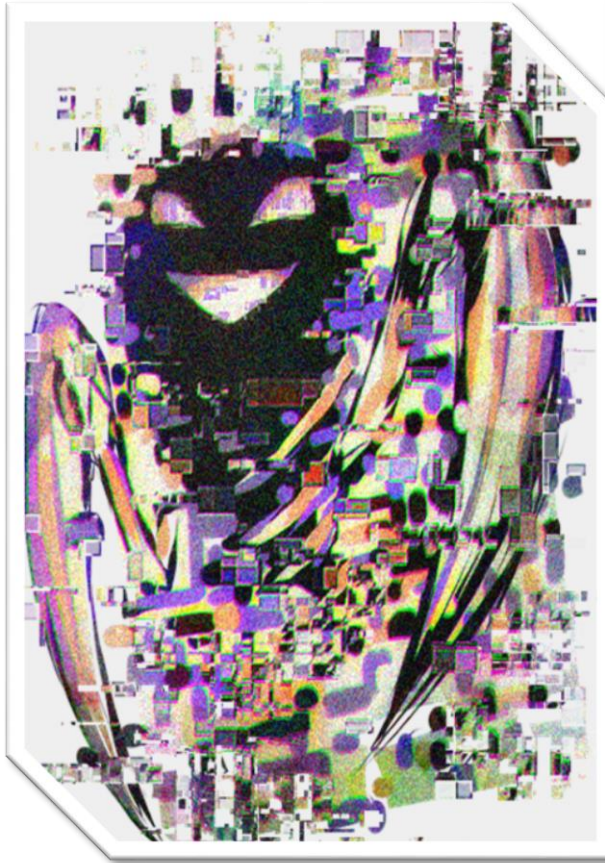
4

3

2



1



I thought...

Here are the criteria I used in ranking the 5 mysterious Pokémon theories.

The theory:

- Is mysterious
- Makes sense
- Is from older generation games
- Is possible

What do you think?

1. Do you agree with my ranking? If you don't, try ranking them yourself. Justify your ranking with data. You may use my criteria or you may use your own.

2. Here are 3 other theories I considered: N is a Zoroark, Why Abra's always teleport away and Butterfree should be Venomoth. Do you think they should have made my list? Give reasons for your response. Are there other theories that you think should have made my list? Explain your choices.